



## SOLID WOOD DELIVERY PROGRAM

SCHORN & GROH

Schorn & Groh is the specialist at your side for high-quality veneers, spliced veneers and lumber – and that for more than 60 years. Our lumber originates from the same regions that our veneers originate from. This means that our wood products, whether thinly sliced or roughly sawn, can be used to harmonize with one another in terms of color, grain, and pattern.

Our branch in Ehrenkirchen-Norsingen in southern Germany specializes in high-quality timber, decking boards and solid tabletops. Here you will find almost 106,000 ft<sup>3</sup> of lumber – much of it kiln dried and available for direct delivery. We also produce more than 35,000 ft<sup>3</sup> of special cuts individually customized to customer requirements.

The experienced team in Ehrenkirchen offers qualified and personalized advice to carpenters and interior designers. We will be more than happy to help you directly on-site and plan the completion of your solid wood projects hand in hand with you.



04 GOOD REASONS TO CHOOSE  
SCHORN & GROH

06 HARDWOODS

08 SOFTWOODS

10 MODIFIED WOODS

12 EXOTIC WOODS

14 SPECIAL CUTS

18 DECKING BOARDS

22 COOKIES

24 TABLETOPS

26 REFERENCES



# GOOD REASONS TO CHOOSE SCHORN & GROH

## WE HAVE MORE THAN...

- 106,000 ft<sup>3</sup> of lumber available in stock – much of it kiln dried and available for direct delivery
- 35,000 ft<sup>3</sup> of special cuts (rift, half-rift, moldings, cuts)
- 70 wood species in various thicknesses and qualities
- 43,000 ft<sup>2</sup> of covered storage area
- 65 million ft<sup>2</sup> veneer – matching the selected lumber

## WE PROVIDE FOR...

- Qualified and personalized advice – for any size of project
- Fast replenishment of lumber
- Flexible logistics thanks to our own vehicle fleet

## WE HAVE...

- More than 60 years of experience with lumber and veneers
- Our own veneer processing facility at our Eschelbronn site
- Two fresh/exhaust air drying chambers
- Long-standing supplier relationships
- A motivated and experienced team



Walnut (EUR) round logs

# HARDWOODS

Whether you are looking for maple, oak, walnut, or plum - at Schorn & Groh you are certain to find an impressive selection of hardwoods in a variety of qualities. Our hardwoods originate primarily from Central and Southern Europe and often have a more vibrant, characteristic texture compared to softwoods. Many hardwood species possess a firmer structure, and are heavier and harder than softwoods. These properties make them particularly suitable for interior finishing and furniture making.



Ash Boards



Oak Moldings

## WOOD TYPE THICKNESSES IN MM

WOOD TYPE	THICKNESSES IN MM
<b>A</b>	
Acacia	36, 52, 65
Alder	32, 36, 52, 65
Apple	36, 52
Ash	22, 27, 32, 36, 42, 52, 65, 80, 100
Ash, hearted	22, 27, 32, 36, 42, 52, 65, 80, 100
<b>B</b>	
Beech, steamed	22, 27, 32, 36, 42, 52, 60, 65, 70, 80, 100
Beech, steamed trimmed	28, 38, 52
Beech, unsteamed	On request
Beech, hearted	36, 52, 65
Birch	32, 42, 52, 60
<b>C</b>	
Chestnut	36, 52
Cherry Am., black.	36, 52, 60, 65
Cherry Eur.	36, 52, 65
<b>E</b>	
Elm Eur., steamed	27, 32, 36, 42, 52, 65
Elm Eur., unsteamed	On request
<b>H</b>	
Hornbeam	On request
<b>L</b>	
Lime	32, 52, 60, 80, 120, 160
<b>M</b>	
Maple	33, 52, 65

Maple, hearted	52, 65
<b>O</b>	
Olive, AD	52
Oak Eur., pippy	22, 27, 32, 36, 42, 52, 65
Oak Eur., knotty	32, 36, 42, 52, 65, 80, 100
Oak Eur.	22, 27, 32, 36, 42, 52, 60, 65, 70, 80
Oak Eur., trimmed	28, 32, 36, 42, 52, 65
Oak, Red	52
<b>P</b>	
Pear	36, 42, 52, 65
Pearwood, Swiss	32, 36, 42, 52
Plum	32, 52
Poplar, burl	52, 65, 80
Poplar, yellow trimmed	33, 42, 52, 65, 80
<b>S</b>	
Satin Walnut	On request
Sycamore	27, 32, 36, 42, 52, 60, 65, 70
Sycamore, figured	On request
Sycamore, weathered	36, 52
<b>W</b>	
Walnut Am.	22, 27, 33, 36, 42, 52, 60, 65, 80
Walnut Am., rustic	52
Walnut Eur.	33, 42, 52, 65, 80
Walnut Eur., rustic	36, 52, 65



Douglas fir boards, split-heart center

WOOD TYPE THICKNESSES IN MM

C	
Cedar, Lebanon	52, 65, 80
Cedar, Western red	On request
D	
Douglas fir	32, 36, 42, 52, 65, 80
F	
Fir	22, 27, 32, 36, 42, 52, 60, 65, 70, 75, 80
H	
Hemlock	On request
L	
Larch	22, 27, 32, 36, 42, 52, 60, 65, 70, 80

P	
Pine	22, 27, 32, 36, 42, 52, 60, 65, 70, 75, 80
Pine, Carolina	On request
Pine, Oregon	On request
Pine, Swiss	32, 42, 52, 60, 80
S	
Spruce	22, 27, 32, 36, 42, 52, 60, 65, 70, 75, 80
Y	
Yew	52

# SOFTWOODS

As softwood specialists, we find ourselves right at the source with our location in southern Germany: based on the cusp of the Black Forest, we buy our logs as regionally as possible or source fresh lumber from Germany and our neighboring countries.

Softwood is primarily suitable for structural applications and, due to its mainly homogeneous structure, for plain interior fittings. Whether for decking boards, moldings or rift goods, it is important for carpenters and interior designers to get the best quality and yield for the price they pay. We take care of all that. This is why we give our softwood sufficient time and always provide for proper storage and drying for your building projects.



Spruce, rift



Cedar, Lebanon



Accoya, trimmed



Reclaimed Oak, beams

# MODIFIED WOODS

Even durable, natural wood finds its limits under extreme weather conditions. Various methods of modifying woods are available for increasing durability and dimensional stability. We attach great importance to sustainable and ecological modification processes.

WOOD TYPE THICKNESSES IN MM

A

Accoya, trimmed	35, 52
-----------------	--------

O

Oak beams, reclaimed	120x120 to 160x160
----------------------	--------------------

Oak boards, reclaimed	32, 52, 80
-----------------------	------------

Oak Eur., smoked	27, 36, 42, 52
------------------	----------------



Oak Eur., smoked rift



Kambala

WOOD TYPE THICKNESSES IN MM

K	
Kambala	36, 52, 65
M	
Macassar	On request
Mutenye	52
R	
Rosewood, Santos	52, 62
S	
Sapele	36, 42, 52, 65
T	
Teak	52
W	
Wenge	36, 52, 65
Z	
Zebrawood	52, 65

# EXOTIC WOODS

Sustainability is a top priority for us. More than 95% of our stock of solid wood are native species, which we can make optimum use of thanks to sophisticated cutting techniques. Even though we try as much as possible to avoid tropical woods, they remain the optimal choice of wood for some purposes.

Exotic woods are popular for outdoor use because of their properties, such as hardness and durability, and are also relatively inexpensive. Depending on the type of wood, they can often have a very simple, homogeneous structure or unusual grain, as is popular, for example, in handicrafts and drums, and for front doors and lots of beautiful one-off items.



Zebrawood



Sapele



Spruce, rift cut

Whether heart-split planks with reduced tension, rift, half rift, or true quarter, our custom cuts are as versatile as our semi-finished products: solid logs from the log center, trimmed lumber for subsequent finishing, or made to measure moldings. We have around 20 grades in stock for oak wood alone.

In production, the logs are cut into real quarters or into logs, depending on their later use. We offer the wood in 22, 27, 32, 42, 52, 60, 65, 80 and 100 mm thicknesses, air or kiln-dried in our own drying facility.

**SPECIAL CUTS:**

- Heart-split planks
- Rift/half rift
- True quarter

**SEMI-FINISHED PRODUCTS:**

- Side goods/rough-planed lumber
- Planed moldings, made to measure
- Beams in various thicknesses
- Decking boards (rift)

**WOOD TYPES IN OUR CONSTANTLY AVAILABLE RIFT GOODS RANGE (PARTIALLY TRIMMED):**

- Douglas fir
- Fir
- Oak Eur.
- Oak, smoked
- Spruce
- Sycamore

# SPECIAL CUTS

As a specialist in special cuts and grades, we pull out all the stops to satisfy our customers' wishes. In doing so, we keep an eye on functional requirements for the lumber as well as aesthetic aspects, for example when veneer and lumber from one wood specie need to create the same appearance in a building project. We accompany our customers' projects from the moment the logs are purchased to their final fitting by our interior design partners.



Ash Eur., true quarter



Douglas fir, moldings



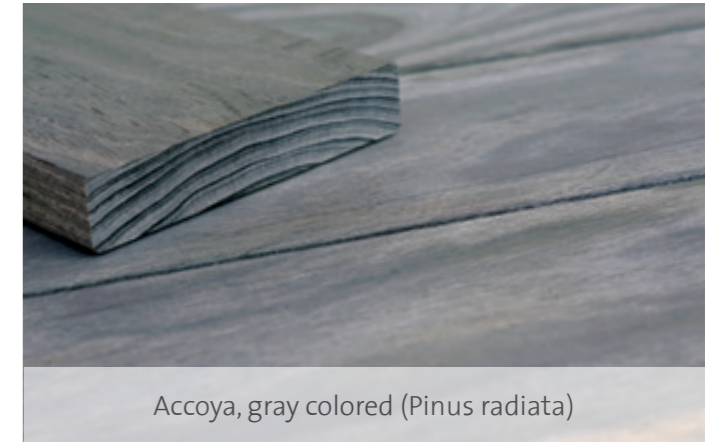


# DECKING BOARDS

The deck represents the focal point between the interior and exterior. It conveys a special ambiance while blending harmoniously with the surroundings. From the decking to the supporting structure, there are countless options available for designing decks today. Sustainability and durability have top priority for us – by choosing our decking boards, you are opting for real wood and quality!



Accoya (Pinus radiata)



Accoya, gray colored (Pinus radiata)



Douglas fir (Pseudotsuga menziesii)



Sweet Chestnut (Castanea sativa)



Robinia / false Acacia  
(Robinia pseudoacacia)



Thermo Ash (Fraxinus excelsior)



Thermo Pine (Pinus sylvestris)



# FITTING FOR DECKING BOARDS

Selecting the right support structure is an essential factor if you want to enjoy your deck for many years to come. Material, design and installation here determine the durability and load-bearing strength of the complete deck.

Decking boards can be fastened to the supporting structure either visibly or invisibly. Supporting structure should not be allowed to rest on the substrate. Our support pads prevent water-logging and reduce noise from foot-fall. Adjustable feet are needed to align the deck on uneven terrain or with high superstructures. A screw thread allows these to be infinitely adjusted in height.



Please visit our website for more information. Scan the QR code to go to the website.

## SUPPORTING STRUCTURE

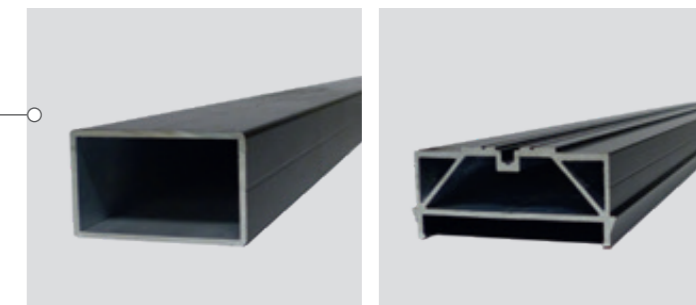
### Wooden supporting structures

The choice of supporting structure depends on the type of decking and the local conditions. This means that the service life of the supporting structure should not be less than the longevity of the decking boards. Wood is usually the cheaper option for building the supporting structure. Longevity is a question of the type of wood used and how it is pretreated.



### Aluminum supporting structures

A supporting structure made of aluminum is a premium option when it comes to longevity. Depending on the profile, it permits large center distances to be achieved and also makes for a lower installation height due to the smaller cross-section.



## FASTENINGS

### Invisible bolted connections from above

Invisible fastening involves connecting the decking boards to the supporting structure using fasteners. No screw heads can be seen on the decking.



### Bolted connections visible from above

The decking boards are pre-drilled, the hole is countersunk and bolted to the supporting structure. Spacers between the decking and the supporting structure keep the bolts from shearing off when the wood swells and shrinks and allow for improved rear ventilation.



## DECK BEDS AND SUPPORT PADS

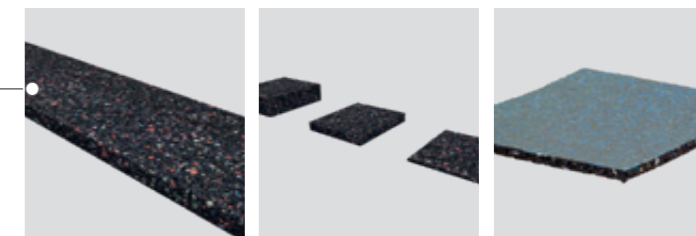
### Deck beds

Available in the following configurations: Rigid adjustable BASE foot for screw mounting; our movable TERRACON® bed for gradient compensation of up to 8%; TERRACON®-FLEX deck bed for insertion into the ground drive-in sleeve.



### Support pads

Available in the following configurations: Base-deck, Isopad, Isopad with coating.





Hearted Ash cookie with black epoxy resin



Raw Redwood cookies

# COOKIES

Solid wood is always relative. Our solid cookies are not something to be taken lightly. Whether as a bedside table, coffee table or decoration: these heavyweight and unique pieces wow with their solid aesthetic and breathtaking potential for surface design. You can obtain the tree slices either raw or end-treated according to your wishes.

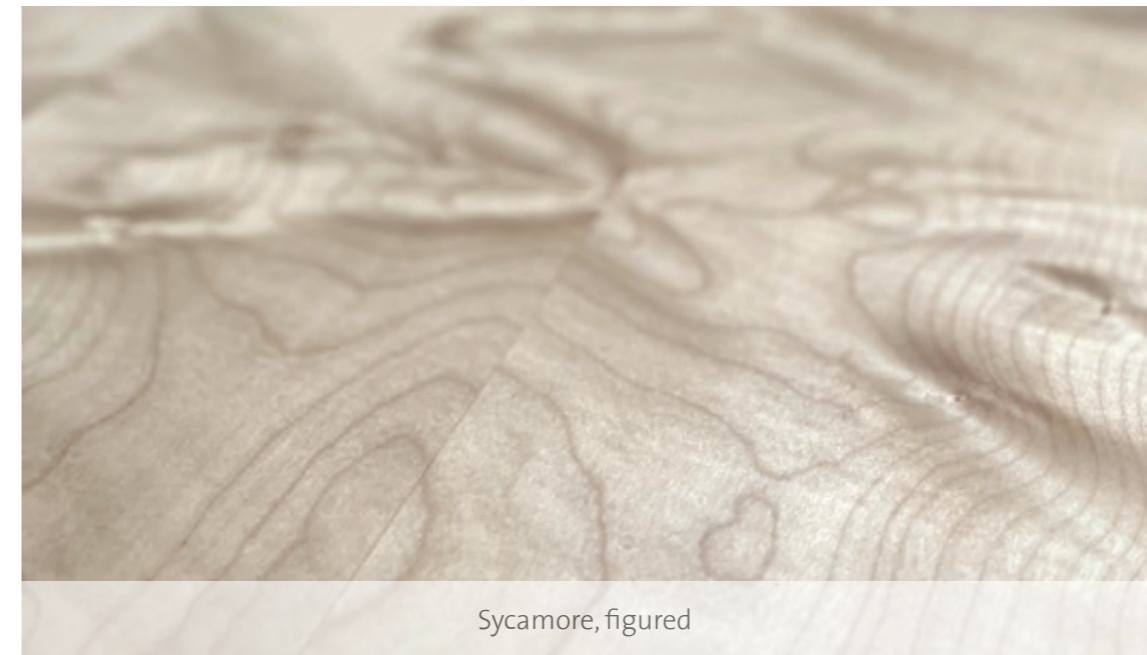
Nature alone dictates our stock of tree slices. We have the 5-20 cm thick and up to 150 cm diameter giant slices in stock for the most common wood species, Oak, Ash, Beech, and Redwood. Other wood species are available at any time on request.



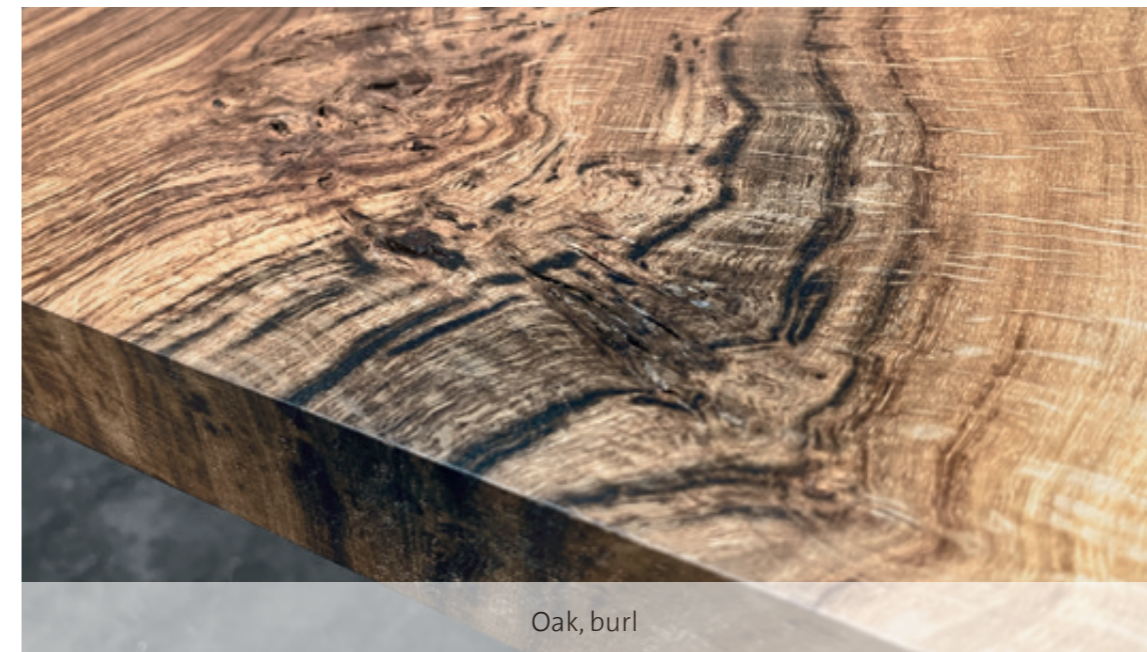
Smoked Oak with moon ring, finished with epoxy resin



Poplar, burl



Sycamore, figured



Oak, burl

# TABLETOPS

More than just a table. A commitment to nature! Whether as industrial design or in country house style – whether as a warm contrast to concrete and steel or luxuriantly rustic – solid tabletops are always unique because of their natural growth and fall entirely into line with the trend among creative carpenters and interior designers.

As distinctive as the logs from which they are cut, tabletops are most sought after for their original natural wood features such as forest edge, knots, cracks, ingrowths, sapwood or flakes. Depending on what nature has to offer, we have around 30 different wood species in our constantly changing assortment. Our buyers travel all over the world to track down the most beautiful specimens and prepare them for their grand entrance.

UNIQUE PIECES

# REFERENCES

Our customers include the trade as well as the entire gamut of veneer and lumber processors in Germany and abroad: from artisanal carpenters and interior designers to large-scale processors in the furniture and door industry.





## SCHORN & GROH

Your contact in Ehrenkirchen

Mario Erhart  
Lumber Purchasing  
Lumber & Veneer Sales  
[mario.erhart@sg-veneers.com](mailto:mario.erhart@sg-veneers.com)

Your contact in Karlsruhe

Sven Goergen  
Lumber Purchasing  
Lumber & Veneer Sales  
[sven.goergen@sg-veneers.com](mailto:sven.goergen@sg-veneers.com)