



UNIQUE. GIGANTIC. SOLID.

Table tops from Schorn & Groh

SCHORN & GROH

As distinctive as the logs from which they are sawn, tabletops are particularly sought after for their natural wood features such as forest edge, knots, cracks, ingrowths, sapwood or flakes.

The design possibilities are as breathtaking as often is the craftsmanship challenge of setting the stage for these raw beauties. That's why Schorn & Groh offers tabletops in a rough pre-sanded version but also calibrated, planed, lacquered, oiled or cast in epoxy resin on request. Schorn & Groh will also be happy to advise you on the selection of a suitable table frame.



# FROM THE RAW BOARD TO THE FINISHED TABLE

STEP 01 CALIBRATION

STEP 02 POURING WOOD FEATURES

- EPOXY RESIN
- TIN
- WOOD KIT
- GLASS

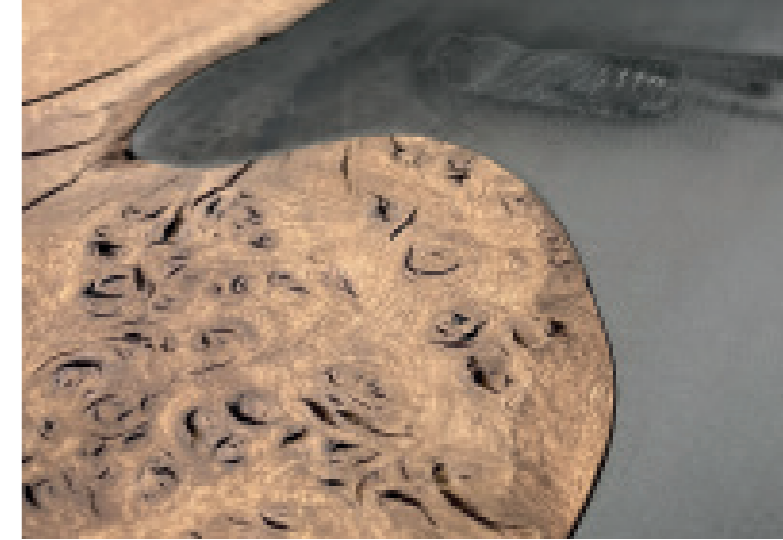
STEP 03 SURFACE TREATMENT

- OILING
- VARNISHING

STEP 04 SELECTION OF A TABLE FRAME

UNIQUE  
SPECIMENS  
OF THE FOREST

IN OAK



# OAK BURL STEEL SPLIT

LENGTH IN CM	WIDTH IN CM	ESTIMATED AGE	THICKNESS IN MM
400	113	approx. 400 years	49

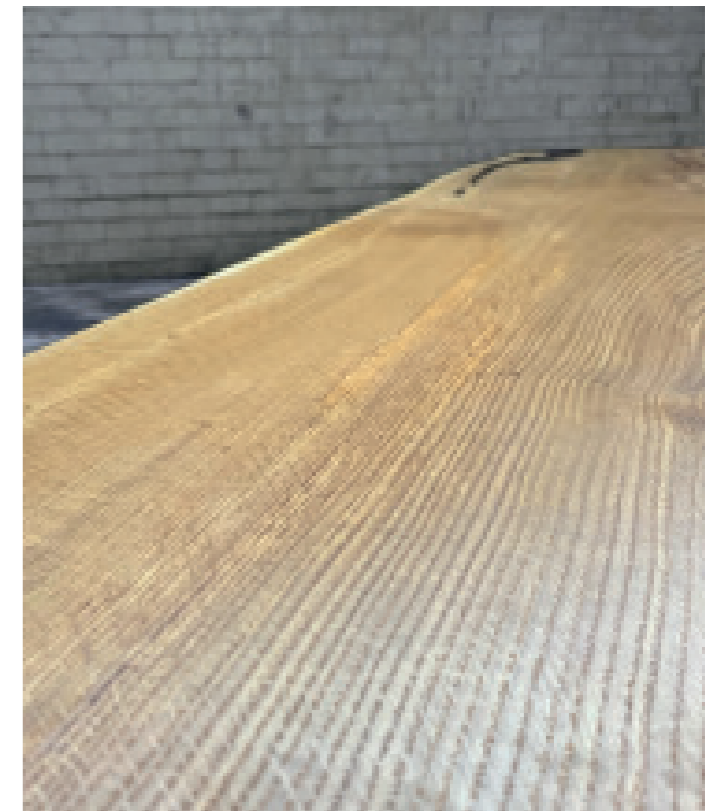
Back in February 2016, our buyers purchased this spectacular oak trunk with a diameter of around 120 cm in the district of Segeberg (Schleswig-Holstein). For 3 years the trunk was seasoned, then gently dried until it could be processed into unique oak burl table tops. The special feature of this table top lies not only in its beautiful grain, but also in its processing. For the design „curved steel split“ the contour of the forest edge was milled and transferred to the robust steel plate for the table center. The still raw steel plate can be powder coated individually according to customer requirements.

# MULTILAYER OAK



This 250 year old oak was bought at auction in Rosenheim in 2019. The two visible sides have been made from one piece. The remaining layers were cross-glued from 18 mm lamellas. The main advantages here are the holistic use of the log (as there is hardly any waste) and series production in different layers. Furthermore, thinner table tops – for example, consisting of three layers – can also be implemented without any problems with this variant.

LENGTH IN CM	WIDTH IN CM (BOTTOM/CENTER/TOP)	ESTIMATED AGE	THICKNESS IN MM
328	118 / 107 / 110	approx. 250 years	60





Bog oak with powder-coated metal plate | Plate length 325 cm

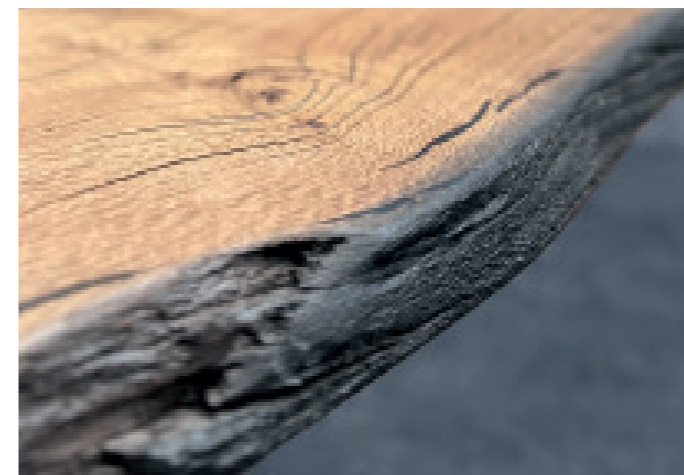


Bog oak with powder-coated metal plate | Plate length 235 cm

# BOG OAK PEBBLE OAK

This high-contrast specimen was recovered from a quarry pond in Dettenheim and is about 3000 years old. The peculiarity of this trunk lies in its unique coloring: While the edges have the typical black coloring of a bog oak, the interior of the trunk is only very slightly darkened. The boards were split and provided with a high-quality, powder-coated metal inlay.

LENGTH IN CM	WIDTH IN CM (BOTTOM/CENTER/TOP)	ESTIMATED AGE	THICKNESS IN MM
235	112 / 105 / 100	approx. 3000 years	60
325	112 / 110 / 100	approx. 3000 years	52





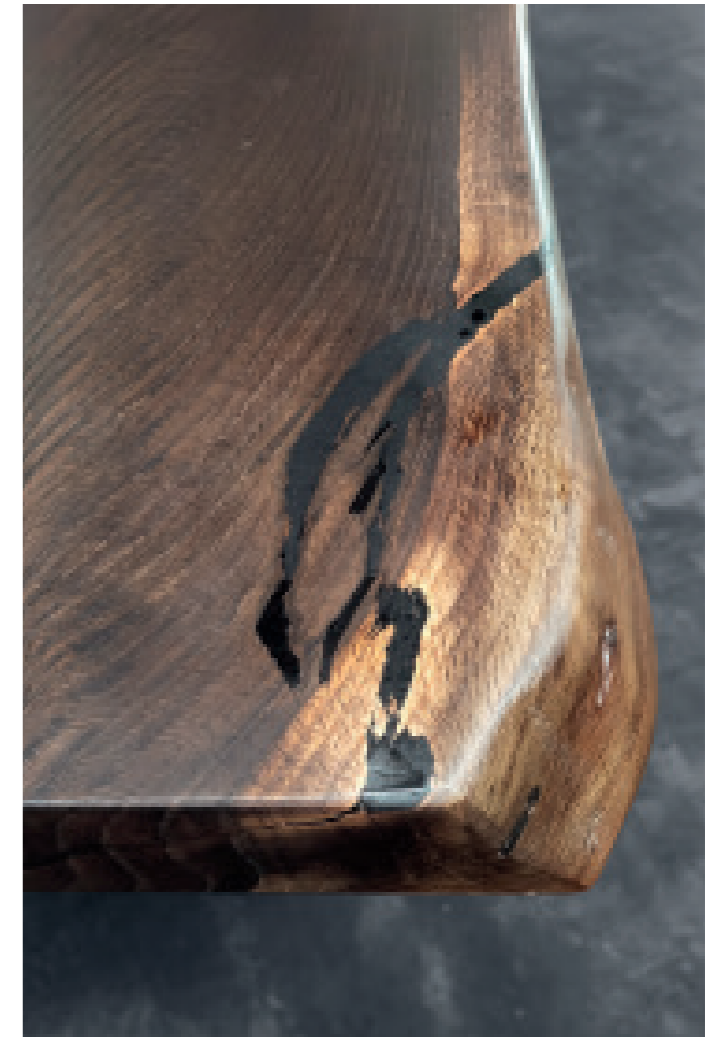
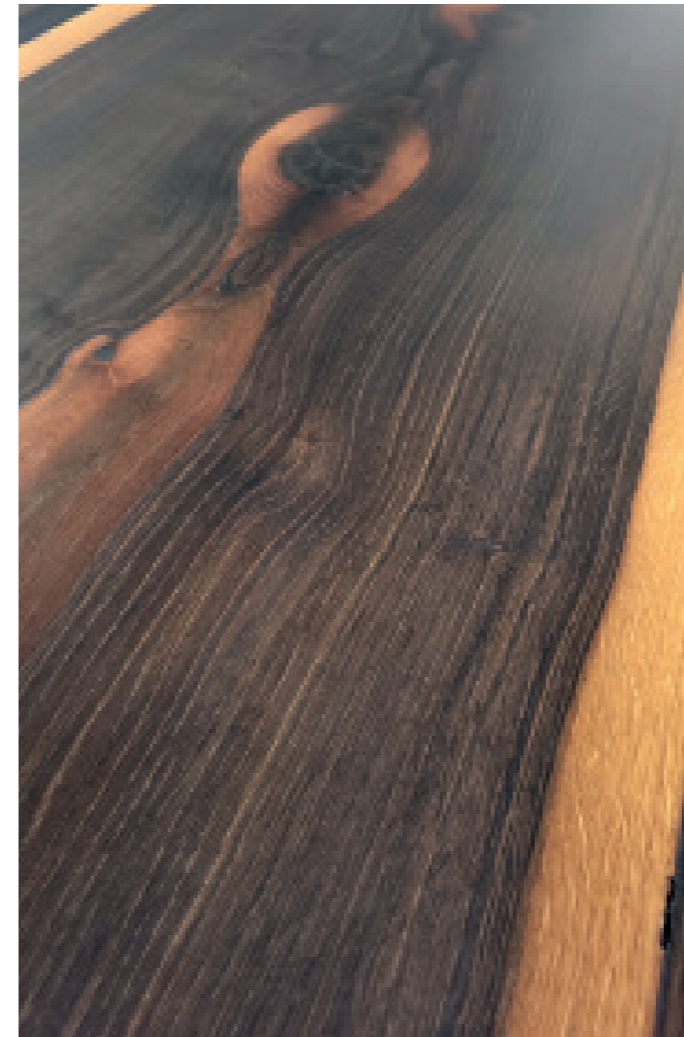
# EUROPEAN OAK

This specimen from the Markgräflerland is the epitome of upcycling. In 2018, an oak log was purchased from Schorn & Groh, which was processed into several solid table tops. During subsequent inspection of the boards, one of the planks slipped off the forklift and broke in half. It was given new life by processing it with black epoxy resin, which reunited the two halves. The board was then treated with oil.

LENGTH IN CM	WIDTH IN CM (BOTTOM/CENTER/TOP)	ESTIMATED AGE	THICKNESS IN MM
290	127 / 113 / 111	approx. 250 years	65







# SMOKED OAK MOON RING

Rarity with „moon ring“: This table top made of a smoked European oak from Lake Starnberg has it all. Only about 1 percent of the oak trees in Germany have a second sap ring grown into the heartwood. Due to late frost periods in spring, these so-called moon rings can develop as a result of damage to fresh wood. Smoking the 4,30 m long solid oak top brought out the sap ring even more due to the lack of tannic acid, making it an absolutely rare gem today.

LENGTH IN CM	WIDTH IN CM (BOTTOM/CENTER/TOP)	ESTIMATED AGE	THICKNESS IN MM
430	129 / 106 / 92	approx. 300 years	65

UNIQUE  
SPECIMENS  
OF THE FOREST

IN WALNUT



# BLACK WALNUT

This black walnut, one of the first specimens exported from the USA and planted in Germany, comes from the exotic garden in Weinheim. The special feature of the table top is not only its unusual diameter but also the slightly marbled wood texture with the decorative pommelé effect on the top. Table top is cast in black epoxy and oiled.

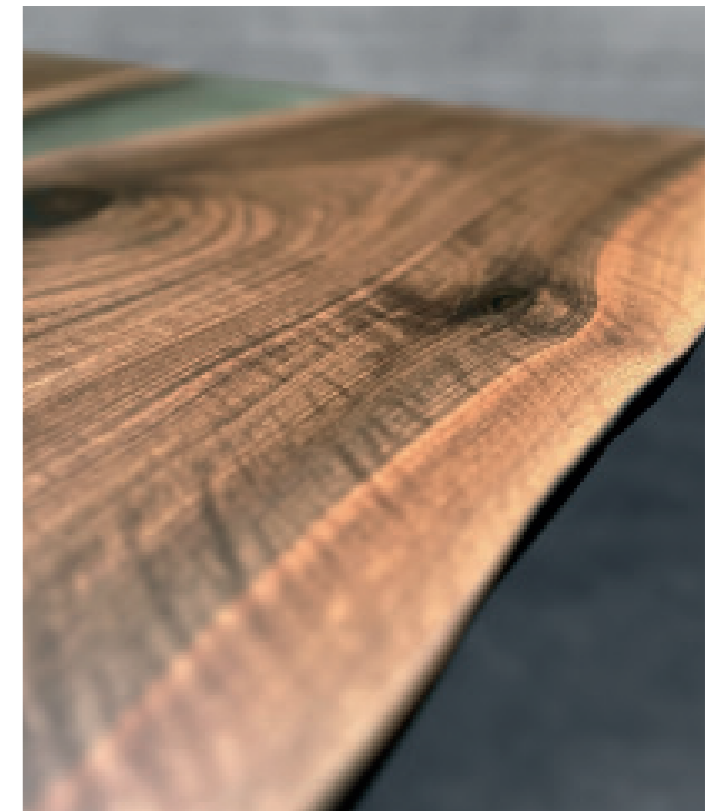
LENGTH IN CM	WIDTH IN CM (BOTTOM/CENTER/TOP)	ESTIMATED AGE	THICKNESS IN MM
410	128 / 102 / 118	approx. 120 years	50



# EUROPEAN WALNUT PAIR

This is a multi-faceted specimen made of two steamed, oiled and book-matched boards with a natural live edge and with clear epoxy resin. The round wood comes from a farm in Sibiu, also known by the German name Hermannstadt.

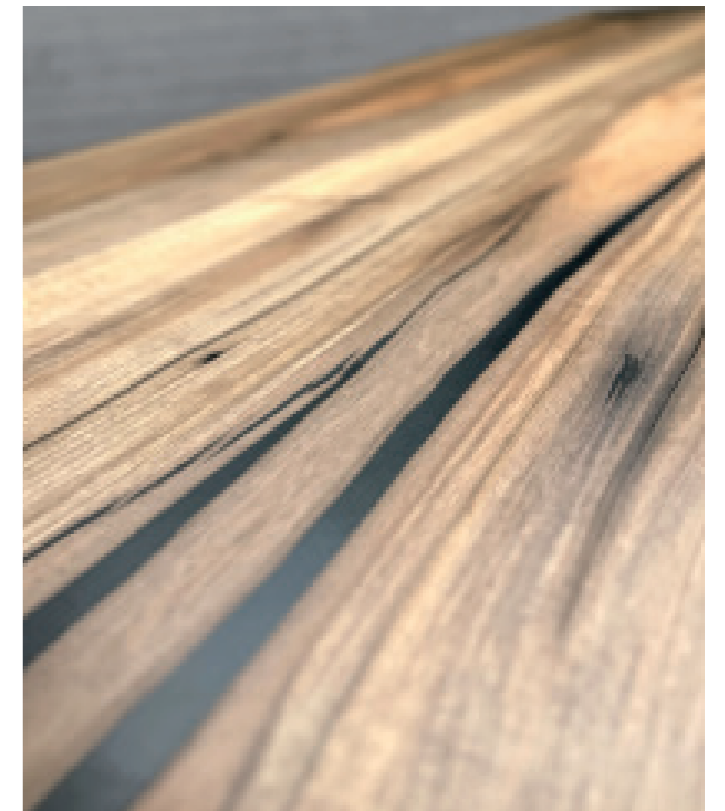
LENGTH IN CM	WIDTH IN CM (BOTTOM/CENTER/TOP)	ESTIMATED AGE	THICKNESS IN MM
297	114 / 106 / 105	approx. 80 years	52



# EUROPEAN WALNUT

An absolutely unique piece! This table top in European walnut with contrasting heartwood / sapwood areas comes from Slovenia and was made from two heart planks of a veneer block, which were glued in book-matched form, cast with black epoxy and then oiled.

LENGTH IN CM	WIDTH IN CM	ESTIMATED AGE	THICKNESS IN MM
350	125	approx. 80-100 years	52



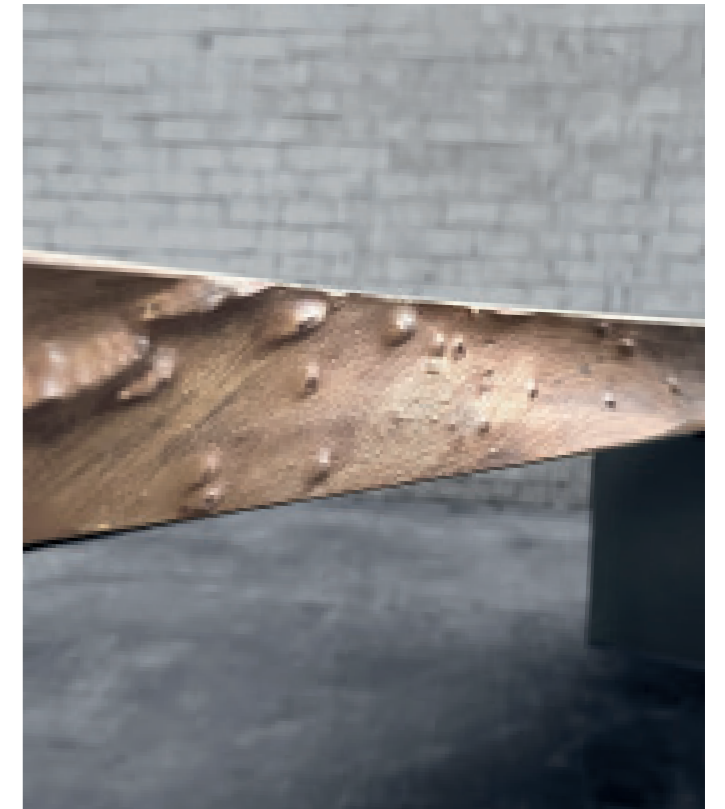
UNIQUE  
SPECIMENS  
OF THE FOREST

IN ELM

# RED ELM

This 120-year-old red elm from Lake Starnberg, purchased in 2015, convinces with its contrast and the numerous details. The table top was composed of two pairs in book-matched joining to form a whole. The powder-coated steel plate embedded in the center of the table makes it as unusual as it is practical.

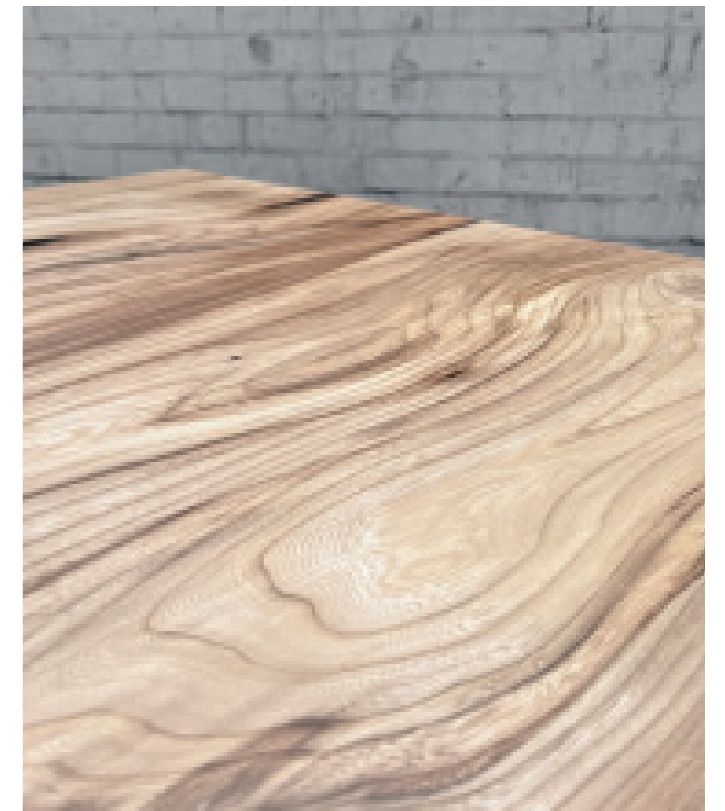
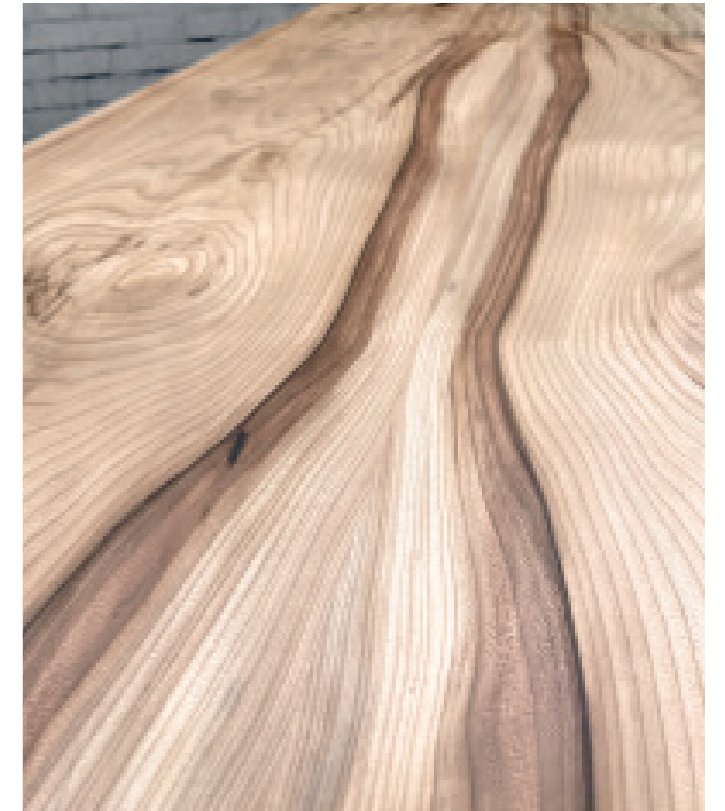
LENGTH IN CM	WIDTH IN CM	ESTIMATED AGE	THICKNESS IN MM
340	125 (narrower at the top)	approx. 250 years	60



# RED ELM

What a grain! This table top in red elm with contrasting heartwood / sap-wood areas was made from two planks that were calibrated and glued in book-matched form, cast with black epoxy and then oiled.

LENGTH IN CM	WIDTH IN CM	ESTIMATED AGE	THICKNESS IN MM
290	approx. 110	approx. 100-120 years	50





UNIQUE  
SPECIMENS  
OF THE FOREST

COOKIES



Brown ash (also called olive ash)



Thuya

# COOKIES WITH KILOS

The massive tree slabs are not for the light shoulder. Whether nightstand, coffee table or decoration: the heavyweight unique specimens with up to 15 cm thickness impress with their massive beauty and a breathtaking potential of surface design. They are available raw or end-treated according to individual wishes.

WOOD SPECIE	DIAMETER IN CM	ESTIMATED AGE	THICKNESS IN MM
Thuya	approx. 120	approx. 60 years	approx. 150
Brown Ash (Olive Ash)	approx. 100	approx. 80 years	approx. 100
Oak	approx. 125	approx. 100 years	approx. 140
Others on request			

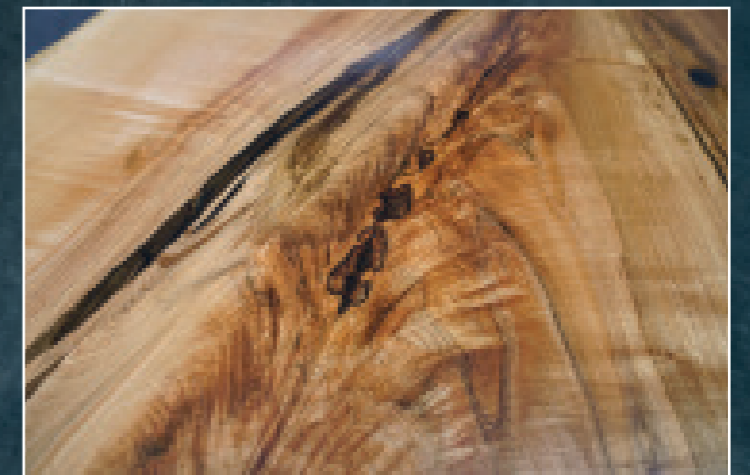
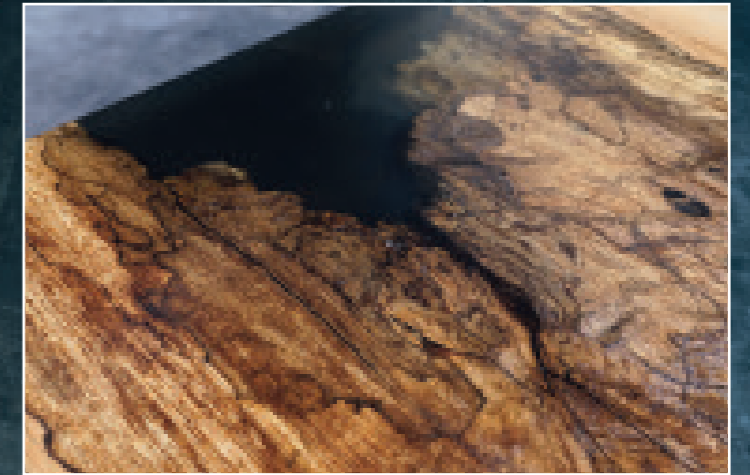


LOOKING FOR  
INSPIRATION?

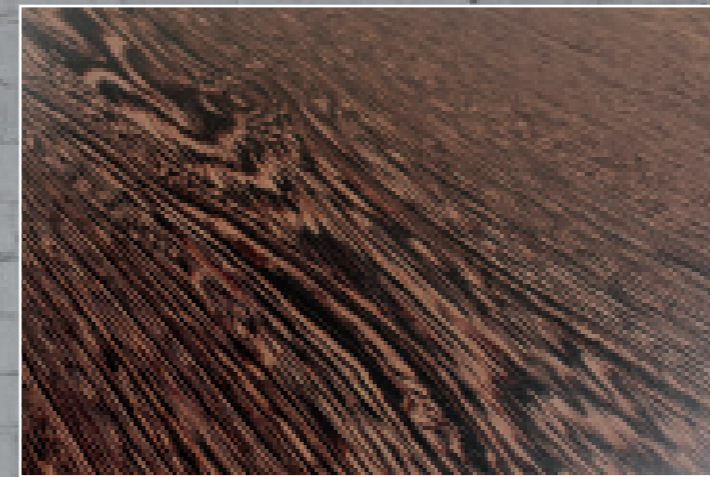
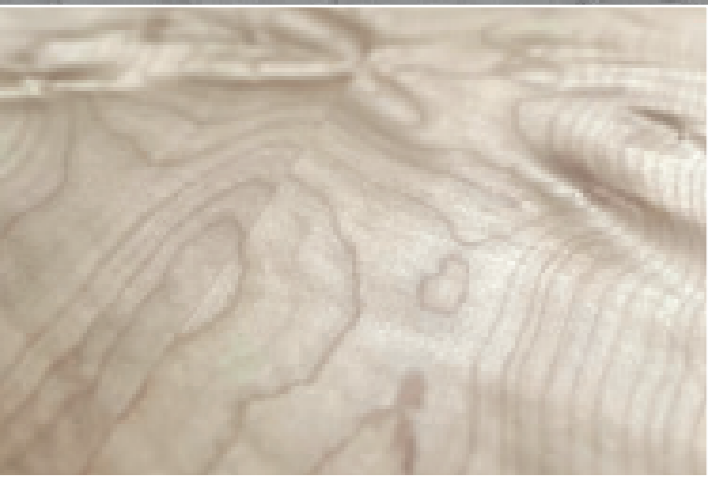
GALLERY

# SYCAMORE

transparent epoxy resin, high gloss | unique piece | Stammberg Lake



The table top shown is only an example. Color and grain may differ.



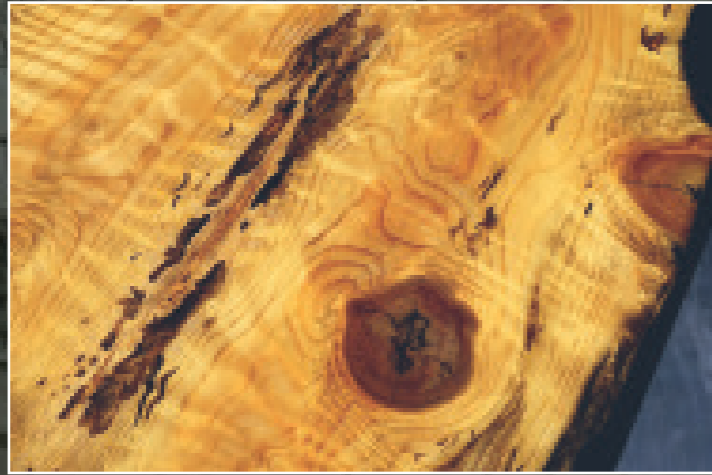
# SYCAMORE PAIR

flamed | with live edge | filled and oiled



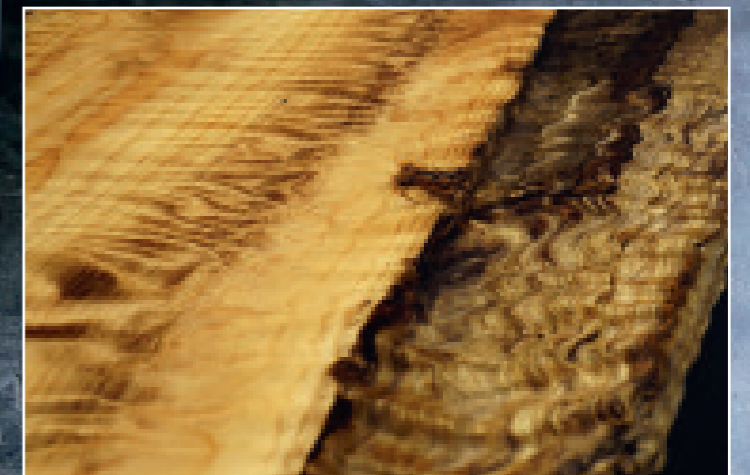
# WENGE PAIR

Two book-matched crown planks | calibrated and oiled |  
approx. 100 years

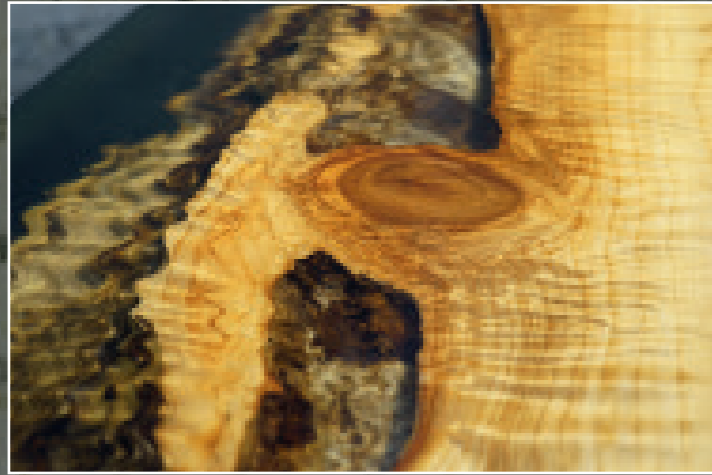


# FIGURED REDWOOD

sandblasted, transparent epoxy resin, high gloss | unique piece | Vancouver Island

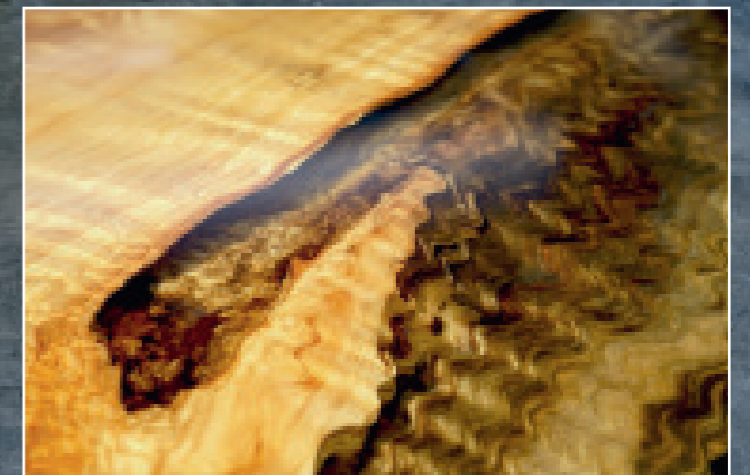


The table top shown is only an example. Color and grain may differ.



# FIGURED REDWOOD COFFEE TABLE

sandblasted, transparent epoxy resin, high gloss | unique piece | Vancouver Island



The table top shown is only an example. Color and grain may differ.



# SMOKED BRICCOLE OAK

smoked glass epoxy resin | joined | Venice Bay

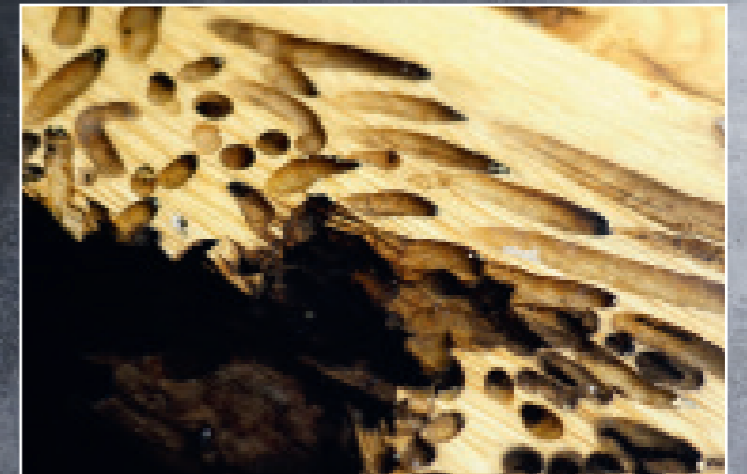
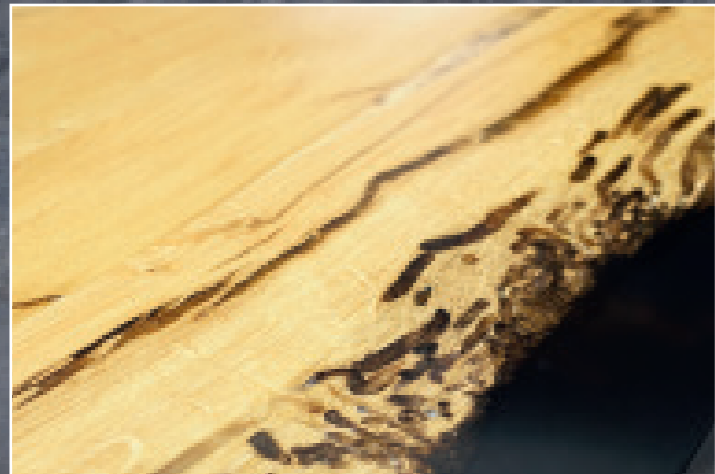


The table top shown is only an example. Color and grain may differ.

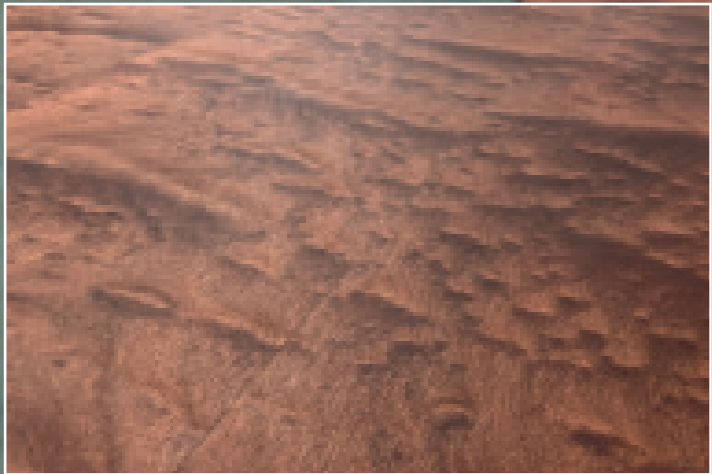
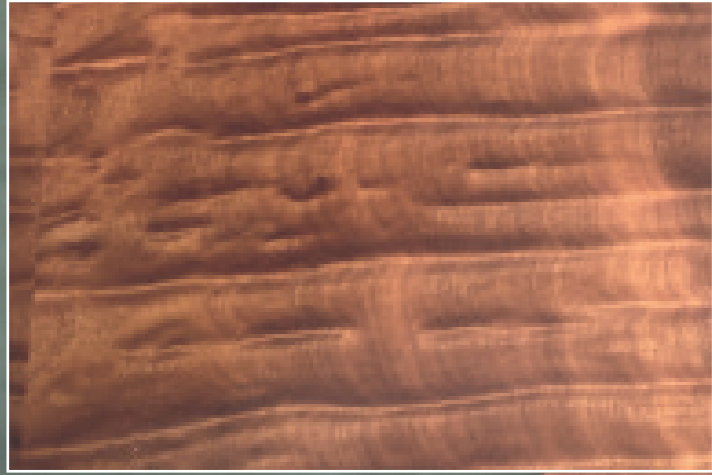


# BRICCOLE OAK

smoked glass epoxy resin | joined | Venice Bay



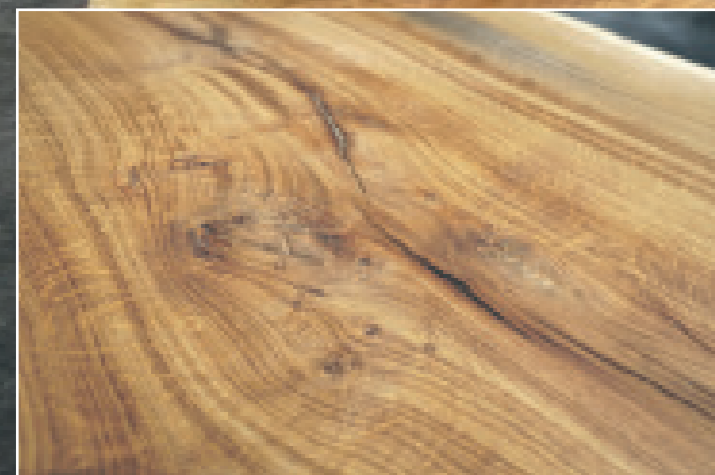
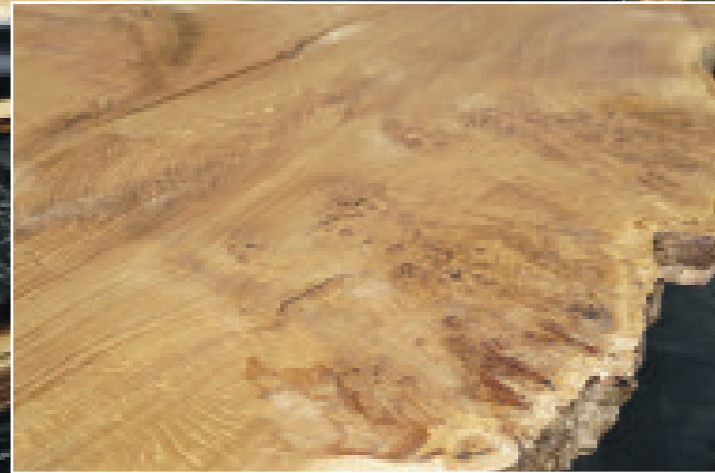
The table top shown is only an example. Color and grain may differ.



# MACORÉ POMMELE

oiled | double bookmatched | Ghana

The table top shown is only an example. Color and grain may differ.



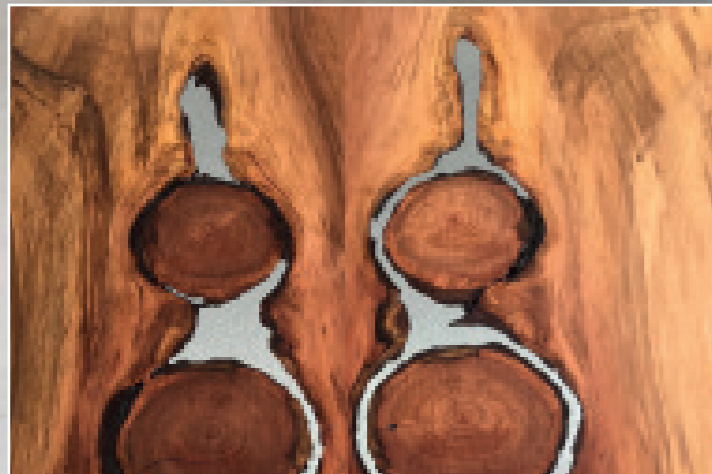
# EUROPEAN OAK CLUSTER

calibrated, oiled | unique piece | Schleswig-Holstein



# REDWOOD CLUSTER

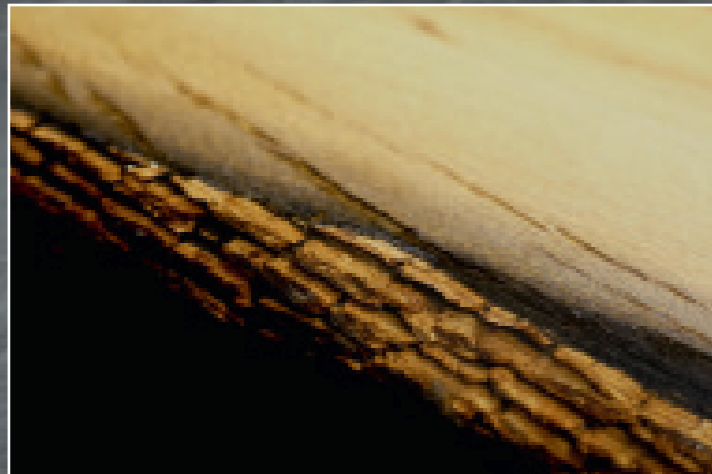
poured with tin | bookmatched | Baden





# BOG OAK / PEBBLE OAK

transparent epoxy resin | unique piece | Rheinkies, Karlsruhe | 2500 years old

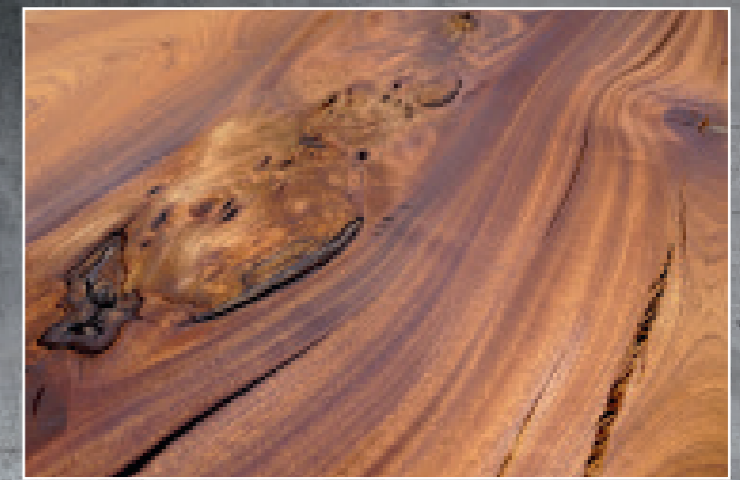
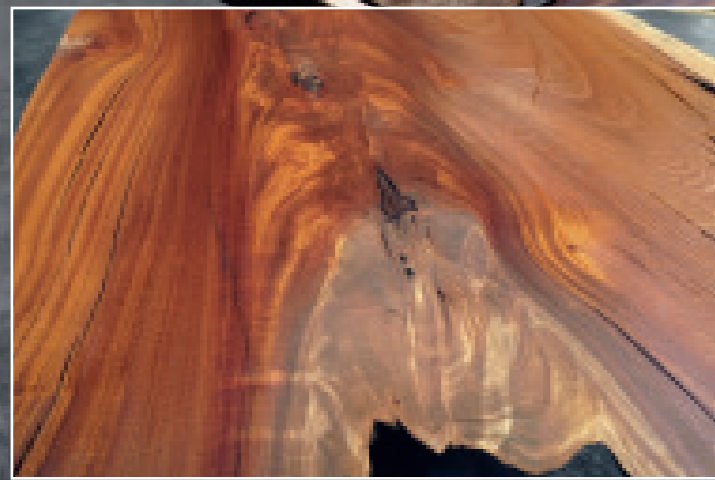


The table top shown is only an example. Color and grain may differ.



# SAPELI CROTCH

calibrated, natural | unique | Ghana



The table top shown is only an example. Color and grain may differ.

# LEBANON CEDAR

calibrated, natural | unique piece | Park Paris



The table top shown is only an example. Color and grain may differ.





Update: April 2023



## SCHORN & GROH

Schorn & Groh GmbH  
Printzstraße 15-17  
76139 Karlsruhe  
Germany

Phone +49 721 962450  
Fax +49 721 615560  
team@sg-veneers.com  
www.sg-veneers.com