

# OUR PRODUCTS



SCHORN & GROH  
Furniere · Veneers

# VARIETY

For more than 55 years the focus at Schorn & Groh has been set on working with genuine wood and high-quality veneer products.

2

Our company is among the global leaders in the veneer industry. Our experienced employees search the best growing regions on all continents for logs suitable for the manufacture of high-quality veneers and lumber. For the protection of the world's forests, we always keep environmental concerns and sustainability in mind. Schorn & Groh is certified by FSC® (licence code FSC-C015406) and PEFC.

## **Our products:**

- high-quality veneer from more than 140 species of wood [Page 4](#)
- exclusive collection One-of-a-Kind [Page 6](#)
- naturally CoCo veneer [Page 8](#)
- shimmering Shining Grey veneer [Page 10](#)
- spliced veneers [Page 12](#)
- fleece-backed spliced veneers fleece'n'flex [Page 14](#)
- structured veneers [Page 16](#)
- plaited veneers muto GRID [Page 18](#)
- easy-to-handle EASiWOOD [Page 20](#)
- end-grain veneer Butt Cut [Page 22](#)
- lumber [Page 24](#)
- logs [Page 26](#)
- overview of wood species [Page 28](#)





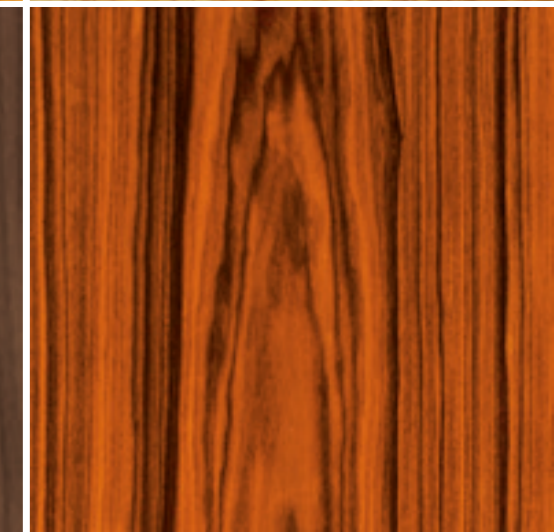
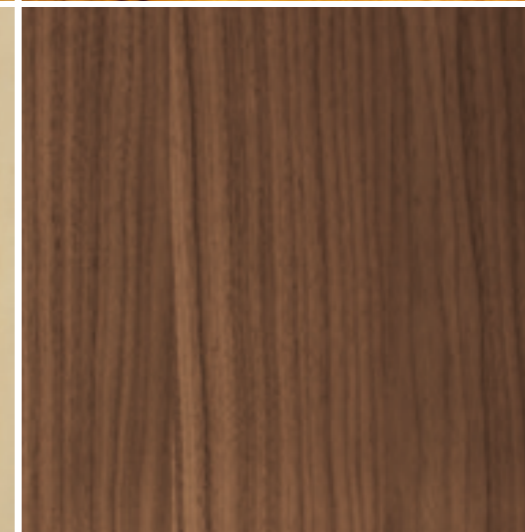
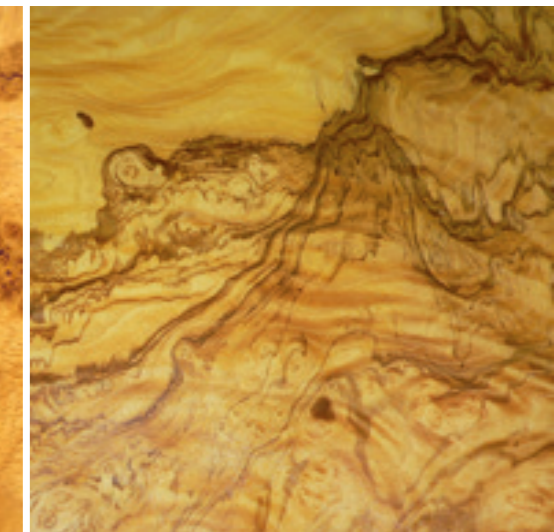
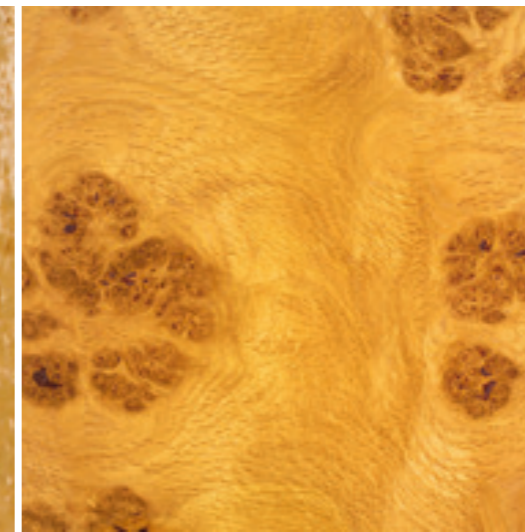
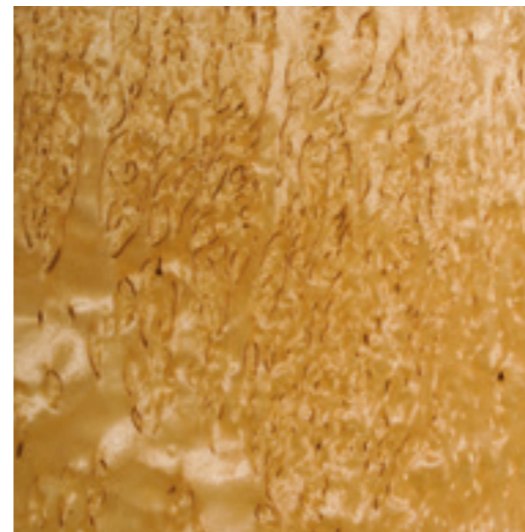
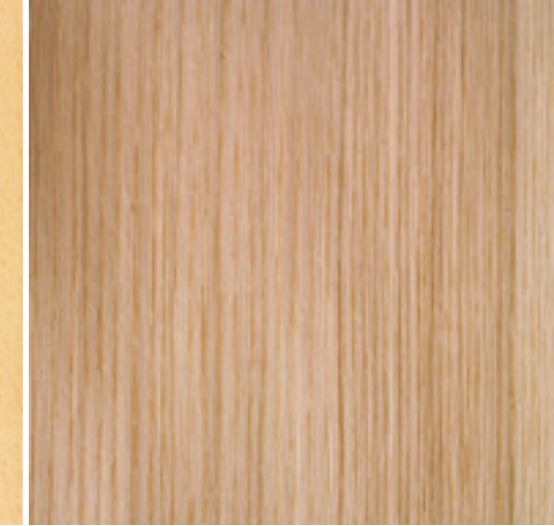
# VENEER

Hardly any other natural product is as varied and as valuable as wood. Its use as veneer is particularly ecological.

4

Years of experience and a good feeling for wood are prerequisites for log purchasing, for few trunks are suitable for the manufacture of high-quality veneer. Our experienced purchasing team buys the logs which we turn into veneer of excellent quality. Much of our work is still done by hand in processes that retain the character and uniqueness of the wood.

Right now Schorn & Groh has more than 140 species of wood in stock, which includes burls and FSC® or PEFC-certified flitches. Our well-stocked warehouse guarantees high quality and immediate availability of your chosen veneer. A special advantage we offer is individually compiled assortments tailored to customer's requirements.



*Are you planning  
a large project?  
Visit our veneer ware-  
house in  
Karlsruhe and let us  
advise you personally  
in our showrooms.*

# ONE-OF-A-KIND

A selection of highly individual flitches, full of character and natural charm.

6

The flitches in the exclusive collection One-of-a-Kind are among the most spectacular objects Nature offers us. Each flitch has a very rare and highly individualized grain. All are truly rough diamonds of fine wood. With high levels of creativity and know-how, we transform the flitches into high-quality veneer for our exclusive collection.

## **One-of-a-Kind Premium**

Because the purchaser acquires the entire flitch, he owns a unique object that no one else has. There's just one in the world. A certificate attests to the exclusivity of your One-of-a-Kind Premium flitch.

## **One-of-a-Kind Select**

The fascinating flitches from One-of-a-Kind-Select are suitable for projects that require smaller amounts of material. One-of-a-Kind Select veneers can be ordered in quantities starting at 100 square meters.

► More information at [www.exclusive-veneer.com](http://www.exclusive-veneer.com)

one-of-a-kind



# COCO

Inspired veneer, naturally dyed in warm shades of brown.  
CoCo – inspired veneer.

8

The special color of CoCo results from a manufacturing technique that's similar to the natural process that creates bog oaks. Our process accelerates the veneer's natural change of color and stains the wood completely. Unlike smoked oak, CoCo can be produced in light and medium shades of brown without application of ammonia.

CoCo veneers can be combined with color and other materials to yield impressive designs. The warm coloring suggests tranquility and underscores the naturalness of the raw material wood. CoCo can be used in many different ways and can be combined with bright colors or with plain white or grey. You may order CoCo as raw veneer or processed, for example, into spliced veneers with or without fleece backing.

► CoCo is currently available in four different shades: **Taupe, Cognac, Coffee and Nero.**

► New: the vintage variant CoCo **Venezia**. The varied discoloration of the wood plus the gnarls and cracks lend the veneer its rustic look.

**COCO**  
INSPIRED VENEER



# SHINING GREY

Veneer in timeless glossy shades of grey. A true innovation from Schorn & Groh.

Shining Grey is a fascinating innovation featuring the currently fashionable color of grey. The glossy grey veneers can be combined with other colors. With natural shades, for example, you can create an elegant ensemble or add vibrant colors to a grey background.

The grey coloring of the wood can be caused by natural weathering. Our innovative manufacturing technique mimics the lengthy ageing process of wood to yield Shining Grey. Just like the natural process, our method is gentle and environmentally friendly.

- ▶ Shining Grey comes in two grey shades – **Ice** and **Graphite** – in the wood species oak, knotty oak and eucalyptus.
- ▶ Recreate the atmosphere of an alpine holiday at home with the vintage variant – Shining Grey **Sunblast**.

*ShiningGrey*



# SPLICED VENEERS

Spliced veneers Made in Germany. More than 140 species of wood are available, including burl veneers and other rarities.

12

Schorn & Groh spliced veneers are made from high-quality raw veneer in our factory in Eschelbronn in southern Germany. We generally offer urea resin-bonded veneer jointing, but can also fill orders for spliced veneers jointed with conventional adhesive techniques.

## **Your benefits:**

- personal and detailed consultation
- veneer specially selected for your project
- fast availability
- on-time delivery
- optional special delivery for rush orders



# FLEECE'N'FLEX

Fleece-backed veneers conform to your ideas and special requirements.

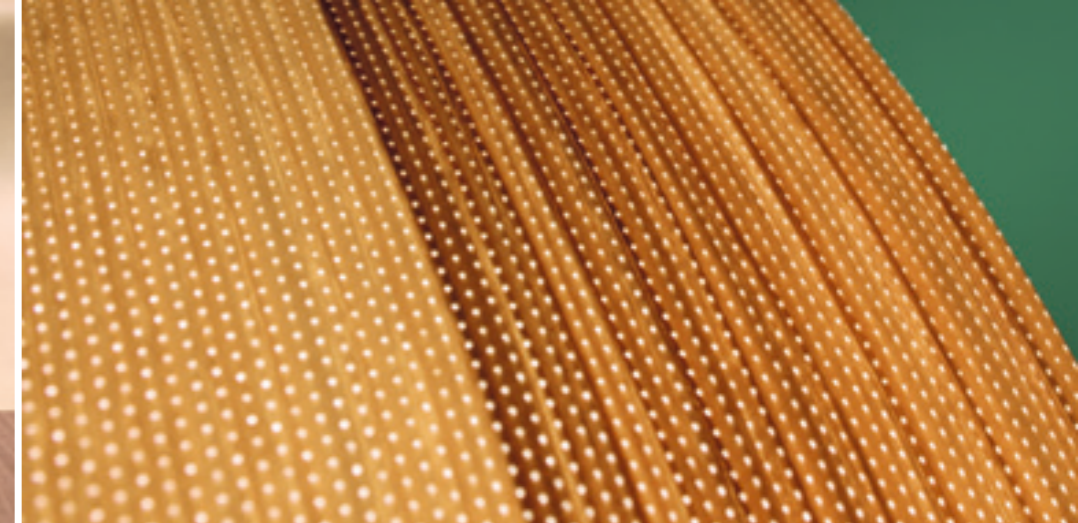
fleece'n'flex veneers are highly flexible yet strong. They are suitable for covering multi-dimensional shapes or challenging substrate and for many other uses. We produce fleece'n'flex applying conventional jointing techniques with urea resin bonding, and in customized sizes up to approximately 3.28 meters by 1.28 meters. Depending on the requirements, we select suitable adhesives and fleece.

## **fleece'n'flex is as flexible as your wishes.**

These options are available:

- sanded extra thin (translucent)
- pre-sanded and/or flexed
- with double veneer layer for greater strength
- with lacquered or melamine-coated surface
- with self-adhesive back
- as wood species mix
- with D4, phenol resin or melamine resin bonding
- perforated (lets through air and sound)

fleece'n'flex





# FLEECE'N'FLEX PLUS

Fleece-filled veneer with textured surface – that special PLUS – in many attractive variants.

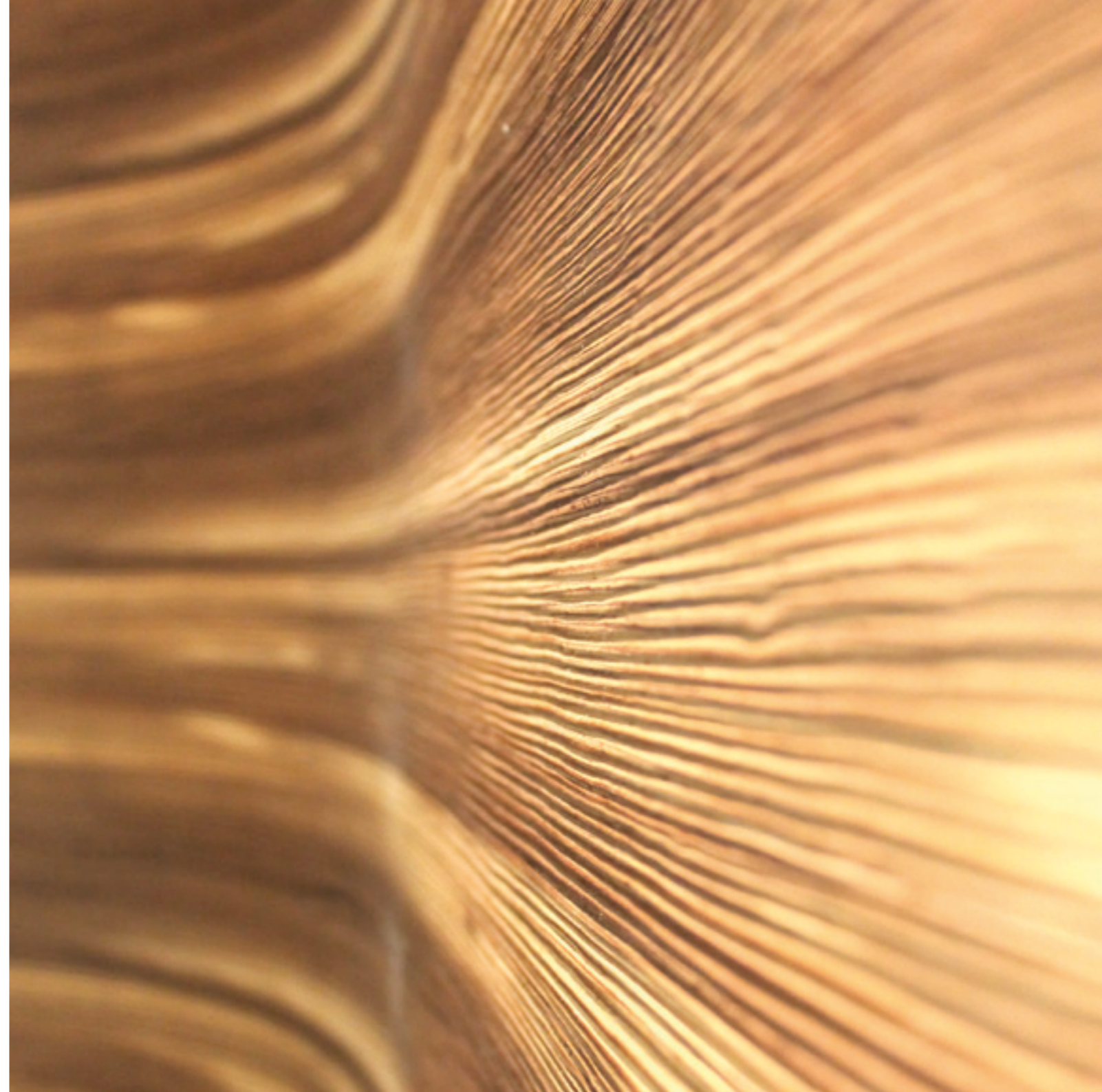
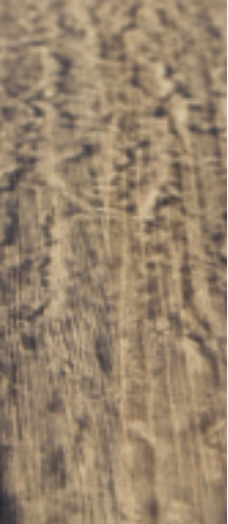
16

Textured veneer from Schorn & Groh is made of two layers of veneer. The face side is fine veneer of your choice and the back is beech veneer with a smooth surface. Fleece between the layers adds strength and suppleness.

The texture, which you can see and feel, is pressed into the fine veneer surface under high pressure and temperature. Available with pre-sanded backside, fleece'n'flex PLUS with textured surface can be applied easily to substrate.

► You'll find all technical information about fleece'n'flex PLUS on our website: [www.sg-veneers.com](http://www.sg-veneers.com)

*fleece'n'flex PLUS  
with textured surface  
is available in the  
variants bark, shingle  
and brushed.  
Minimum order:  
100 square meters.*



# MUTO GRID

Fleece-backed veneer is now available with plaited surface

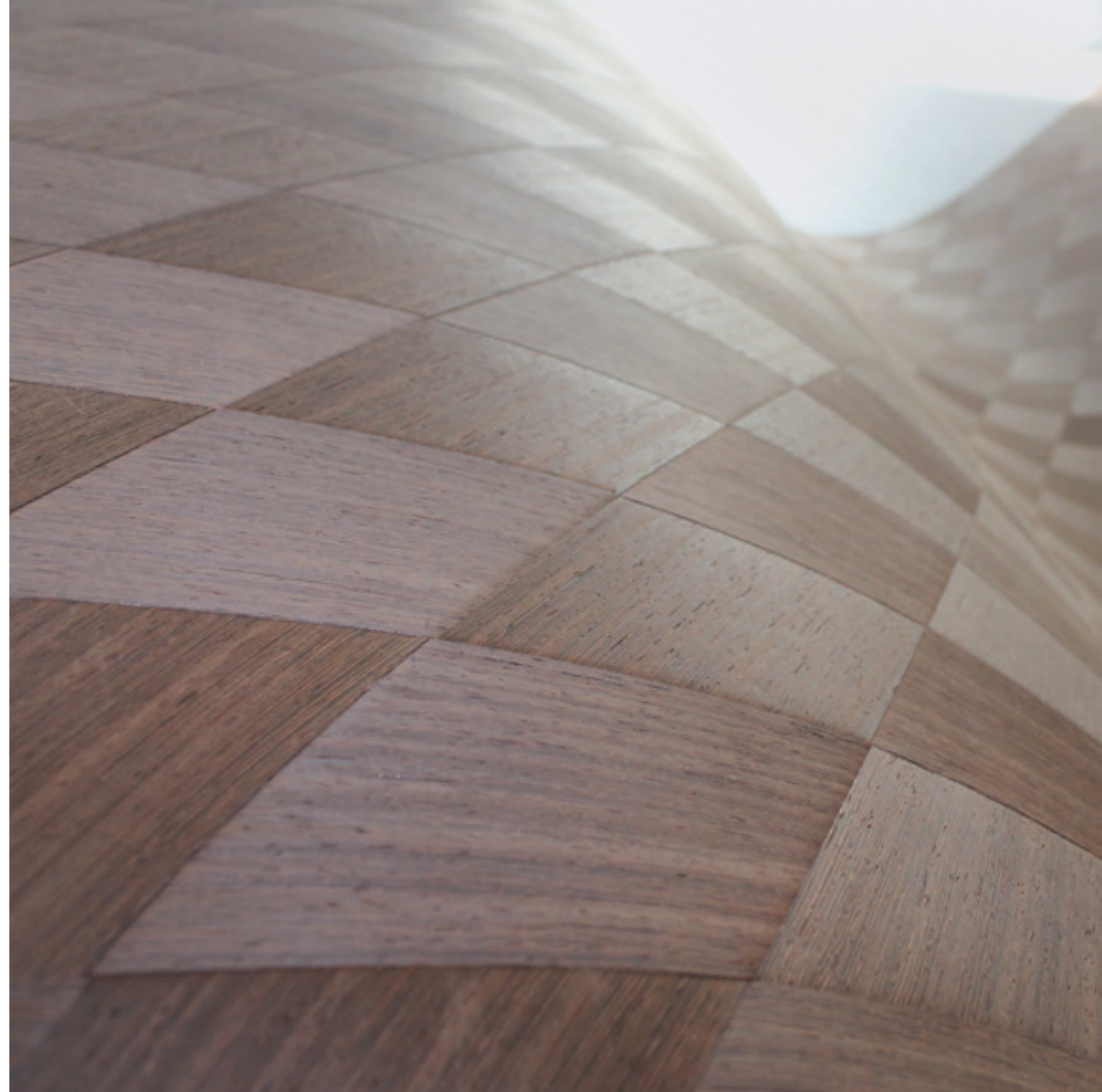
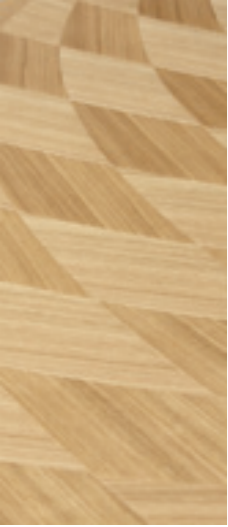
18

Plaited veneer with perfectly coordinated patterns and colors opens up a new dimension in design. The fascinating three-dimensional plaited pattern was developed in close cooperation with architects and designers.

In a complex process, the single pre-sanded leaves of veneer are plaited to create highly diverse surfaces and then backed with fleece. The fleece backing gives the material greater flexibility and guarantees trouble-free processing. Let yourself be inspired by our designs.

► You'll find all technical information about muto GRID on our website: [www.sg-veneers.com](http://www.sg-veneers.com)

*muto GRID can also be  
created and produced  
to your individual  
requirements.*



# EASiWOOD

The extremely flexible veneer combines the natural beauty of wood with easy use.

EASiWOOD is high-quality veneer of certified wood with extra strong fleeced backing. During its manufacture EASiWOOD is pre-flexed to make the fibers supple and extremely flexible.

The flexible veneer is very easy to use. It can be cut simply with scissors or craft knife and can be securely bonded to most dry substrate. The surface of the wood is pre-sanded and requires only the finishing touch of varnish or oil.

► You can order EASiWOOD in standard sizes of 2,440 x 1,220 mm (minimum order: one sheet). Eleven variants are available. More information at [www.sg-veneers.com](http://www.sg-veneers.com) or order directly at [team@sg-veneers.com](mailto:team@sg-veneers.com)

**EASiWOOD**  
Flexible Veneer Sheets



# BUTT CUT

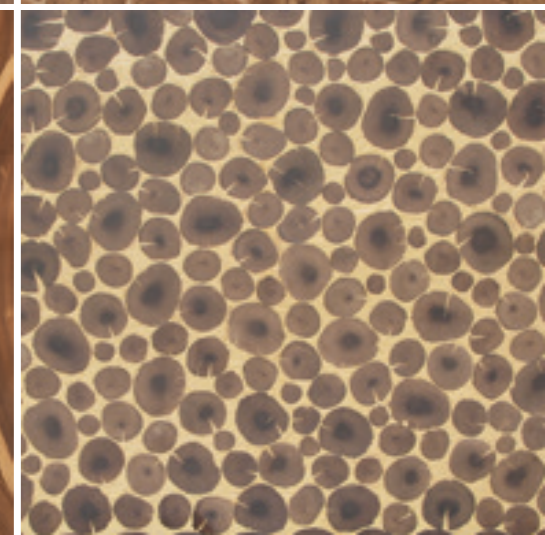
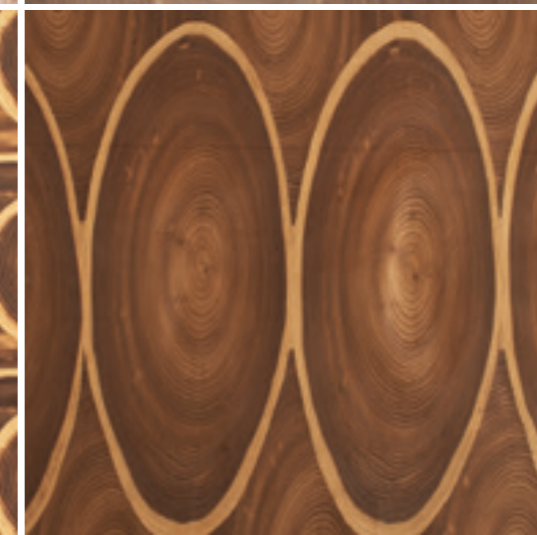
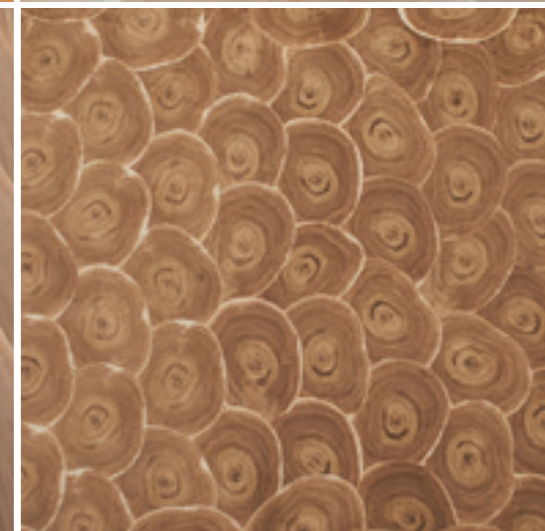
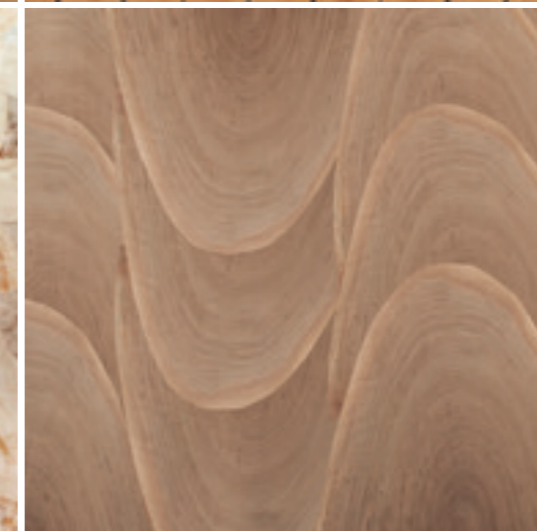
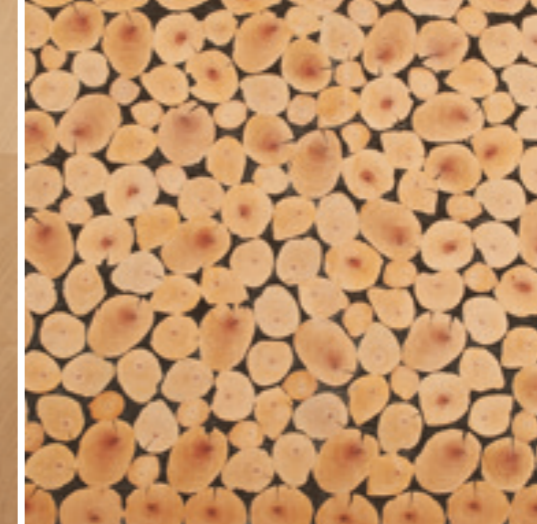
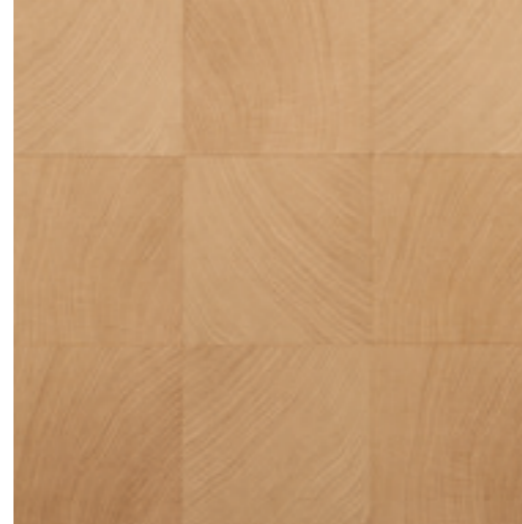
Razor-thin veneer cut from precious end-grain wood in unique designs.

The fascinating look of Butt Cut is created by the matching of many small pieces of end-grain wood. The veneer has a special rustic character. Butt Cut is manufactured by cross-cutting the tree trunk rather than cutting it lengthwise. The annual growth rings form lovely circular patterns.

**Butt Cut has many advantages over solid cross-cut wood:**

The thinness of the veneer relieves the stress in the cross-cut wood while fleece on the back adds stability and allows easy processing. When handled properly, the product shows no trace of glue bleed-through, warping or distortion.

► More information and photos of all 16 variants can be found on our website: [www.sg-veneers.com](http://www.sg-veneers.com)



# LUMBER

Schorn & Groh offers high-quality lumber in all commercially available wood species from Europe, America and Africa.

Our lumber comes from the same growing regions as our veneer, so you can select both to match.

Depending on the intended use, the trunks are processed as rift cut or flat cut lumber in boules. This lumber is particularly suitable for premium interior joinery, furniture-making and yacht fittings. We offer the woods in thicknesses of 25, 30, 35, 40, 50, 52, 60, 65, 70 and 80 mm, air-dried or kiln-dried in our own drying facilities.

Schorn & Groh service includes qualified, personal consultation for cabinet-making companies and interior finishing operations. We will be happy to visit you and help plan your project.

*The Schorn & Groh-branch in Ehrenkirchen (southern Germany) specializes in high-quality lumber.*





26



# LOGS

Logs in high veneer-grade quality from the best growing regions of the world.

Schorn & Groh offers logs from the best growing regions. The valuable trunks come mainly from Germany, but also from the USA and Africa.

We offer a variety of burls in addition to more conventional wood species such as beech and oak. More than 50 species of wood are available.

We are happy to satisfy special requests. You may have your logs waxed, measured or weighed and delivered in containers or by truck as quickly as possible.



*Because environmental protection is so important to us, we have long supported sustainable forestry.*



# SPECIES OF WOOD

## A

Acacia  
Alder  
Amboyna burl  
Anegré  
Anegré, figured  
Apple  
Ash  
Ash burl  
Ash, figured  
Ash, olive  
Ash, olive burl  
Avodire  
Ayous

## B

Bamboo  
Beech, figured  
Beech, hearted  
Beech, spalted  
Beech, steamed  
Beech, unsteamed  
Bibolo  
Birch  
Birch burl  
Birch, curly  
Bosse  
Bubinga  
Bubinga pommele

## C

Camphor burl  
Cedar, Lebanon  
Cedar, Spanish  
Cedar, Western red  
Cerejeira  
Cerejeira crotch  
Chen chen  
Cherry, American

Cherry, American figured  
Cherry, European  
Chestnut  
Chestnut burl  
Chestnut, horse  
Chestnut, smoked  
Cocobolo  
Cumaru  
Curupixa  
Curupixa, figured  
Cypress

## D

Dibeton  
Douglas, European  
Doussie

## E

Ebony,  
Ebony, amara  
Ebony, white  
Elm burl  
Elm, Dutch  
Elm, grey  
Elm, red  
Etimoe  
Eucalyptus  
Eucalyptus burl  
Eucalyptus, figured  
Eucalyptus pommele  
Eucalyptus, smoked

## F

Fir

## G

Goiabao  
Goncalo alves  
Grenadillo

## H

Hemlock  
Hickory  
Hornbeam

## I

Imbuya  
Imbuya burl  
Ipe  
Iroko  
Ironwood

## J

Jarrah  
Jatoba  
Jatoba, figured

## K

Kevazinga  
Kingwood  
Koa  
Koto  
Koto, figured

## L

Larch  
Larch, smoked  
Laurel burl  
Laurel, East indian  
Limba  
Lime  
Louro faya, Silky Oak  
Louro preto

## M

Madrone burl  
Madrone, golden  
Mahogany, Caoba  
Mahogany crotch

Mahogany, Khaya  
Mahogany, Kosipo  
Mahogany, Sapele  
Mahogany, Sapele pommele  
Mahogany, Utile  
Makore  
Makore, block-figured  
Makore, figured  
Makore pommele  
Mango  
Maple, American  
Maple, American figured  
Maple, birdseye  
Maple burl  
Maple, heartwood  
Maple, quilted  
Merbau  
Movingui  
Movingui, figured  
Mutenye  
Mutenye, figured  
Myrtle burl

## O

Oak, American white  
Oak, bog  
Oak, brown  
Oak, brown burl  
Oak burl  
Oak cluster  
Oak, European  
Oak, European – CoCo  
Oak, European – Shining Grey  
Oak, pippy  
Oak, red  
Oak, smoked  
Oak, smoked red  
Olive

## P

Padauk, African  
Padauk, Southeast Asian  
Paldao  
Palm  
Pearwood  
Pecan  
Pine  
Pine, carolina  
Pine, cembra  
Pine, Oregon  
Planetree burl  
Planetree, European  
Planetree, flaked  
Plum tree  
Poisonwood  
Poplar  
Poplar burl  
Poplar grisard, silver  
Primavera  
Purpleheart

## R

Redwood  
Rosewood, Bahia  
Rosewood, Burma  
Rosewood, East indian  
Rosewood, Eldorado  
Rosewood, Madagascar  
Rosewood, Santos

## S

Sassafras  
Satinwood, Ceylon  
Satinwood, Ceylon figured  
Sen  
Spruce  
Spruce, knotty  
Sucupira

Swiss pearwood  
Swiss pearwood, figured  
Sycamore, European  
Sycamore, European cluster  
Sycamore, European figured

## T

Tamo  
Teak  
Thuya burl  
Tineo  
Tulipwood

## V

Vavone burl  
Violet (Kingwood)

## W

Walnut, American  
Walnut, American burl  
Walnut, American crotch  
Walnut, American figured  
Walnut, European  
Walnut, European burl  
Walnut, European crotch  
Walnut, European figured  
Walnut, Satin  
Walnut, Satin smoked  
Wenge  
Willow

## Y

Yew tree  
Yew tree burl

## Z

Zebra wood  
Zircote

► **Veneer gallery:** In our veneer gallery you'll find photos and information about more than 140 species of wood. All species can be purchased in commercially available variations and in special assortments from Schorn & Groh. [www.sg-veneers.com](http://www.sg-veneers.com)

► **"Veneer Designer" online tool:** Experiment in our veneer gallery to see ideal combinations of veneers, colors and materials and lovely matched veneers.







**SCHORN & GROH**  
Furniere · Veneers

**Schorn & Groh GmbH**

**Veneers and lumber**

76139 Karlsruhe · Printzstraße 15-17 · Phone + 49 721 96245-0 · Fax + 49 721 61 55 60

**Veneers and lumber**

89343 Jettingen-Scheppach · Robert-Bosch-Straße 8 · Phone + 49 8225 2656 · Fax + 49 8225 9 02 01

**Spliced veneers / fleece-backed spliced veneers**

74927 Eschelbronn · Industriestraße 34 · Phone + 49 6226 7857 350 · Fax + 49 6226 40817

**Lumber**

79238 Ehrenkirchen · Im Hägle 8 · Phone + 49 7633 16727 · Fax + 49 7633 12241